

# MJHJ4P

## Mobile 4-Port PoE Network Switch Quick Start Guide



# Important Safeguards and Warnings

Please read the following safeguards and warnings carefully before using the product in order to avoid damages and losses.

## Note

- Do not expose the device to lampblack, steam or dust. Otherwise it may cause fire or electric shock.
- Do not install the device at position exposed to sunlight or in high temperature. Temperature rise in device may cause fire.
- Do not expose the device to humid environment. Otherwise it may cause fire.
- The device must be installed on solid and flat surface in order to guarantee safety under load and earthquake. Otherwise, it may cause device to fall off or turnover.
- Do not place the device on carpet or quilt.
- Do not block air vent of the device or ventilation around the device. Otherwise, temperature in device will rise and may cause fire.
- Do not place any object on the device.
- Do not disassemble the device without professional instruction.

## Warning

- Please use battery properly to avoid fire, explosion and other dangers.
- Please replace used battery with battery of the same type.
- Do not use power line other than the one specified. Please use it properly. Otherwise, it may cause fire or electric shock.

## Special Announcement

- This manual is for reference only.
- All the designs and software here are subject to change without prior written notice.
- All trademarks and registered trademarks are the properties of their respective owners.
- If there is any uncertainty or controversy, please refer to the final explanation of us.
- Please visit our website for more information.

# Table of Contents

<b>1</b>	<b>Product Overview</b> .....	<b>- 1 -</b>
1.1	Specifications and parameters.....	- 1 -
1.2	Front Panel.....	- 2 -
1.3	Rear Panel.....	- 2 -
1.4	Aviation Port .....	- 3 -
1.5	Installation and Connection.....	- 4 -
<b>2</b>	<b>Quick Configuration</b> .....	<b>- 5 -</b>
2.1	Software Setting .....	- 5 -
2.1.1	Network Setting.....	- 5 -
2.1.2	IPC Configuration.....	- 5 -
2.2	WEB Setting .....	- 8 -
2.2.1	Network Setting.....	- 8 -
2.2.2	IPC Configuration.....	- 8 -

# 1 Product Overview

## 1.1 Specifications and parameters

**Product name:** 4-port PoE Network Switch

**Product dimension:** 159\*100\*30mm (Length\*Width\*Height)

**Application environment:** Mobile HD surveillance transmission and power supply

**Working environment:** Temperature: -30°C~65°C, humidity: 0~95% (no condensation)

**Power supply:** Aviation port power supply >60W

**Port description:** Aviation port power supply, five 10/100 Mbps self-adaption RJ 45 ports, 4 channels with PoE power supply network port while 1 channel main network port supports port auto reverse (Auto MDI/MDIX)

**Network medium:** category 5 and above unshielded twisted pair ( $\cong$  100m)

**Forward mode:** Store & forward

**Support protocol:** IEEE 802.3, IEEE 802.3u, IEEE802.3x

**Network delay:** Max delay within 20 microseconds

**Flow control mode:** Full duplex adopts IEEE 802.3x standard, half duplex adopts Back pressure standard

**PoE total power consumption:** 48W

**PoE port:** 1-4 port support IEEE 802.3af (15.4W) network power supply.

**PoE power supply wire:** 1/2 + 、 3/6- wire pair

**Weight:** 1.5KG/piece

**Heat dissipation:** Fanless, natural heat dissipation

**Working height:** Altitude 3000m (10,000ft)

## 1.2 Front Panel

The front panel is shown in Figure 1-1.

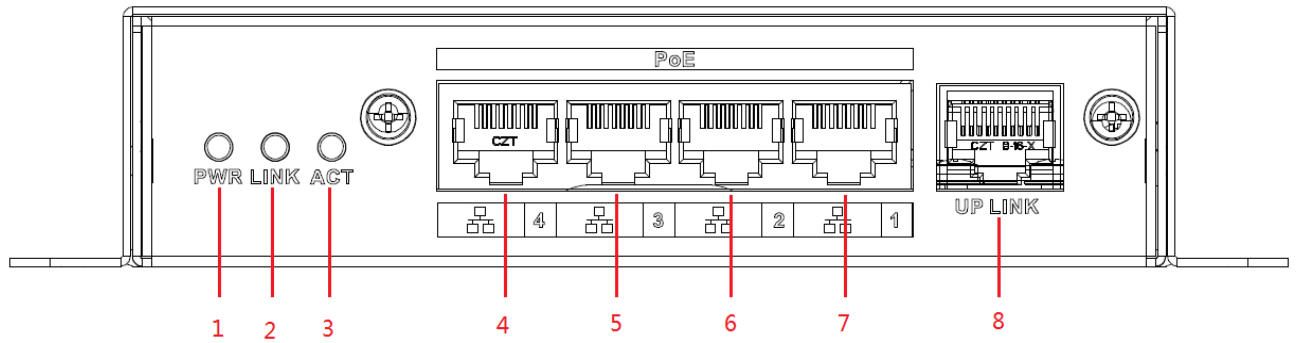


Figure 1-1

SN	Mark	Name	Note
1	PWR	Power indicator light	Normally on when power is enabled
2	LINK	Network indicator light	Normally on when network port connects to LINK
3	ACT	Network indicator light	ACT flashes when data transmitting
4	4	LAN 4	IPC port
5	5	LAN 3	IPC port
6	6	LAN 2	IPC port
7	7	LAN 1	IPC port
8	UPLINK	Main network port	Device mainframe connector

## 1.3 Rear Panel

The rear panel is shown in Figure 1-2.

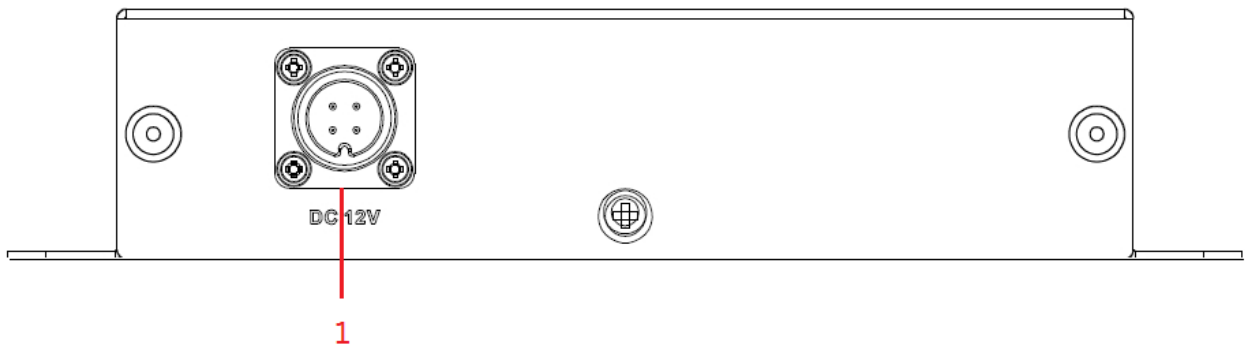


Figure 1-2

SN	Name	Note
1	Aviation port	Power supply port

## 1.4 Aviation Port

See Figure 1-3 for more details about the aviation port.

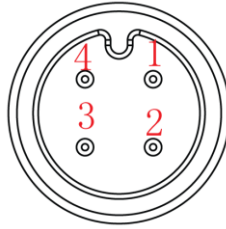


Figure 1-3

DC 12V pin definition

Terminal Number	Definition
1	DC12V+
2	GND
3	NULL
4	NULL

## 1.5 Installation and Connection

See Figure 1-4 for more details about the installation and connection.

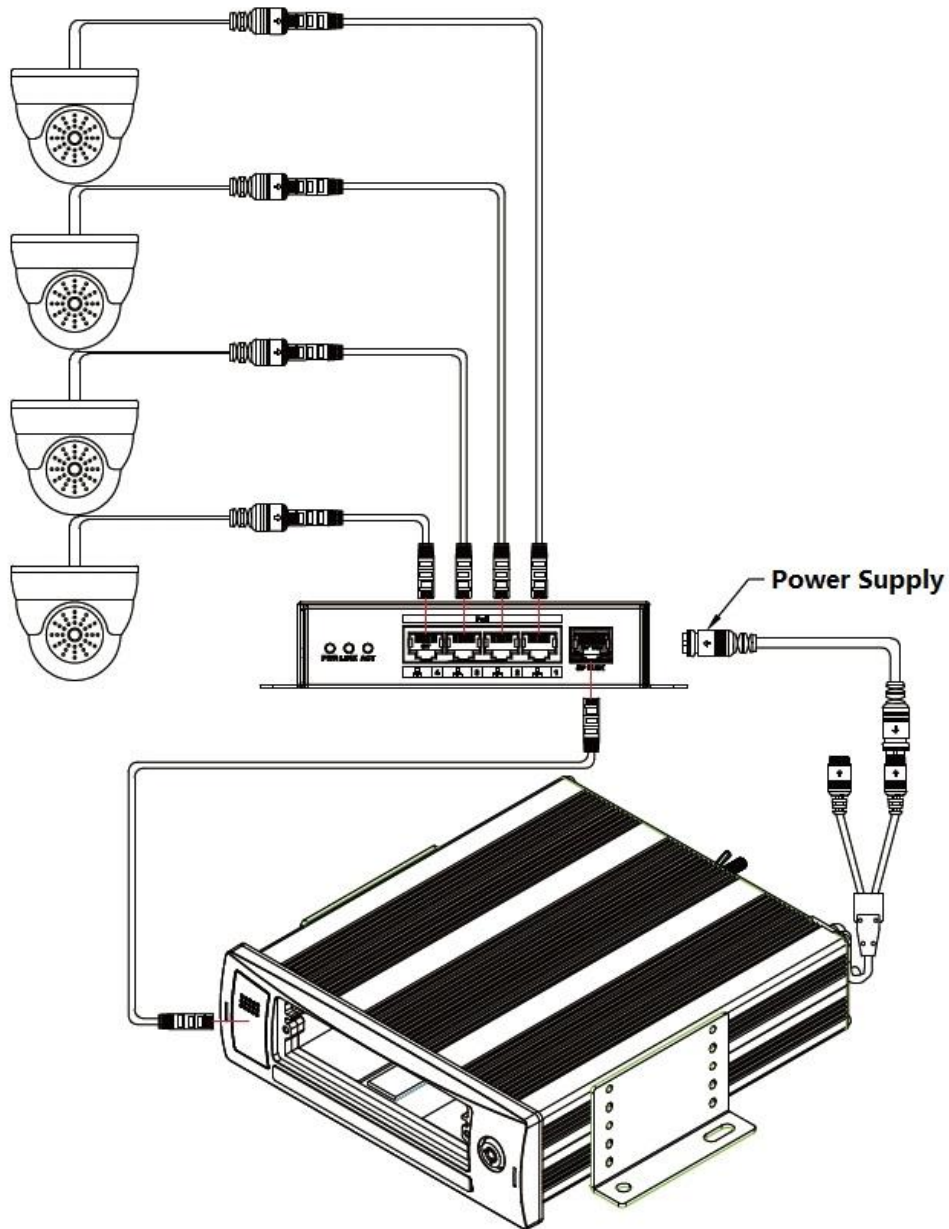


Figure1-4

Note:

Network cable, camera and other accessories are not included in the accessories bag, users have to prepare by themselves.

The network cable cover should be installed when accessing network cable, which is to prevent the network cable from being loose during vibration.

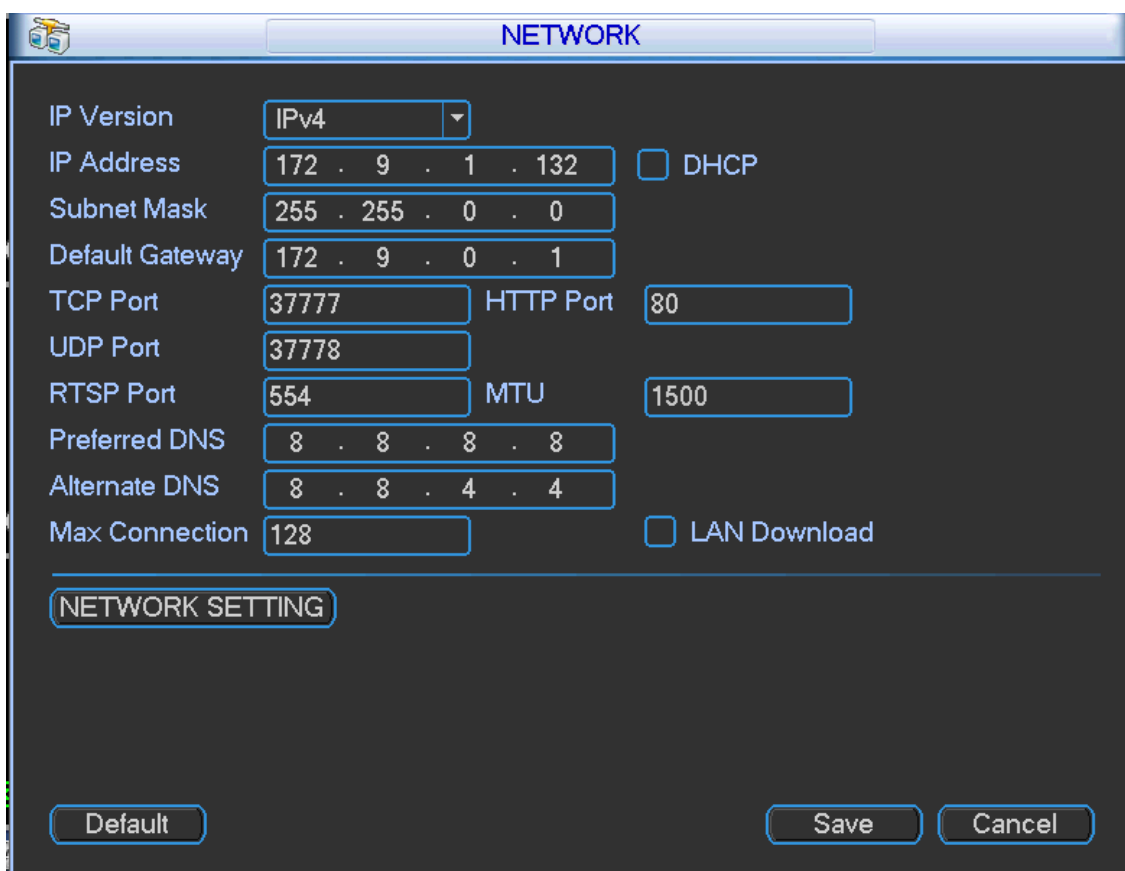
## 2 Quick Configuration

### 2.1 Software Setting

IPC needs to configure IP address which should be the same as the IP address of NVR during use.

#### 2.1.1 Network Setting

Step 1 Enter “Main Menu” > “System Setting” > “Network Setting” interface, as shown in Figure 2-1.



The screenshot displays the 'NETWORK' configuration window. It features a title bar with a camera icon and the word 'NETWORK'. The main area contains several settings, each with a text input field and a checkbox. The settings are: IP Version (dropdown menu set to 'IPv4'), IP Address (172 . 9 . 1 . 132), Subnet Mask (255 . 255 . 0 . 0), Default Gateway (172 . 9 . 0 . 1), TCP Port (37777), HTTP Port (80), UDP Port (37778), RTSP Port (554), MTU (1500), Preferred DNS (8 . 8 . 8 . 8), Alternate DNS (8 . 8 . 4 . 4), Max Connection (128), DHCP (unchecked), and LAN Download (unchecked). At the bottom, there is a 'NETWORK SETTING' label, a 'Default' button, and 'Save' and 'Cancel' buttons.

IP Version	IPv4	
IP Address	172 . 9 . 1 . 132	<input type="checkbox"/> DHCP
Subnet Mask	255 . 255 . 0 . 0	
Default Gateway	172 . 9 . 0 . 1	
TCP Port	37777	HTTP Port 80
UDP Port	37778	
RTSP Port	554	MTU 1500
Preferred DNS	8 . 8 . 8 . 8	
Alternate DNS	8 . 8 . 4 . 4	
Max Connection	128	<input type="checkbox"/> LAN Download

NETWORK SETTING

Default Save Cancel

Figure 2-1

Step 2

Set corresponding IP address to the "IP Address", "Subnet Mask" and "Default gateway", click "Save".

#### 2.1.2 IPC Configuration

The IP address of IPC and the IP address of "Network Setting" should be kept in the same network segment.



Step 1

Enter “Main Menu” > “Remote Device” or “Main Menu” > “IPC” configuration interface, as shown in Figure 2-2:

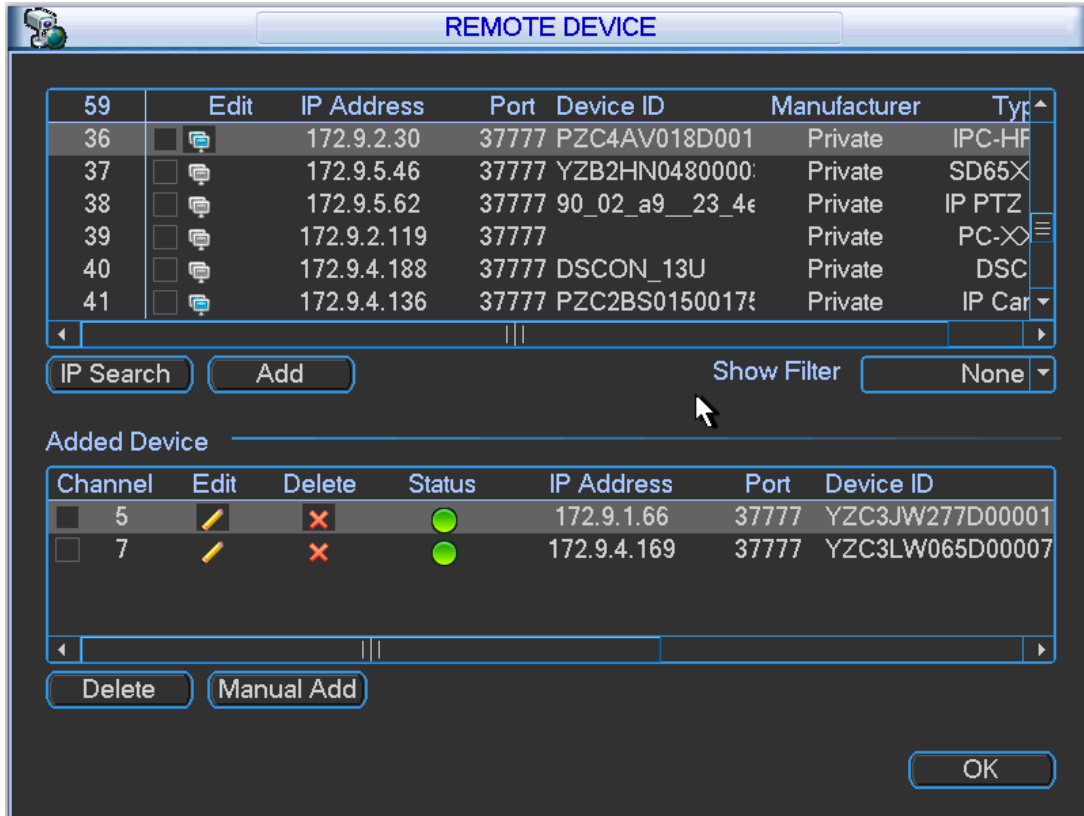


Figure 2-2

Step 2

Click "Device Search" and corresponding IPC can be searched. Attention: It will fail to search corresponding IPC if the IP address of IPC and the IP address of NVR are not in the same network segment.

Step 3

Click the icon under "Edit", enter "Modify IP" configuration interface, as shown in Figure 2-3:

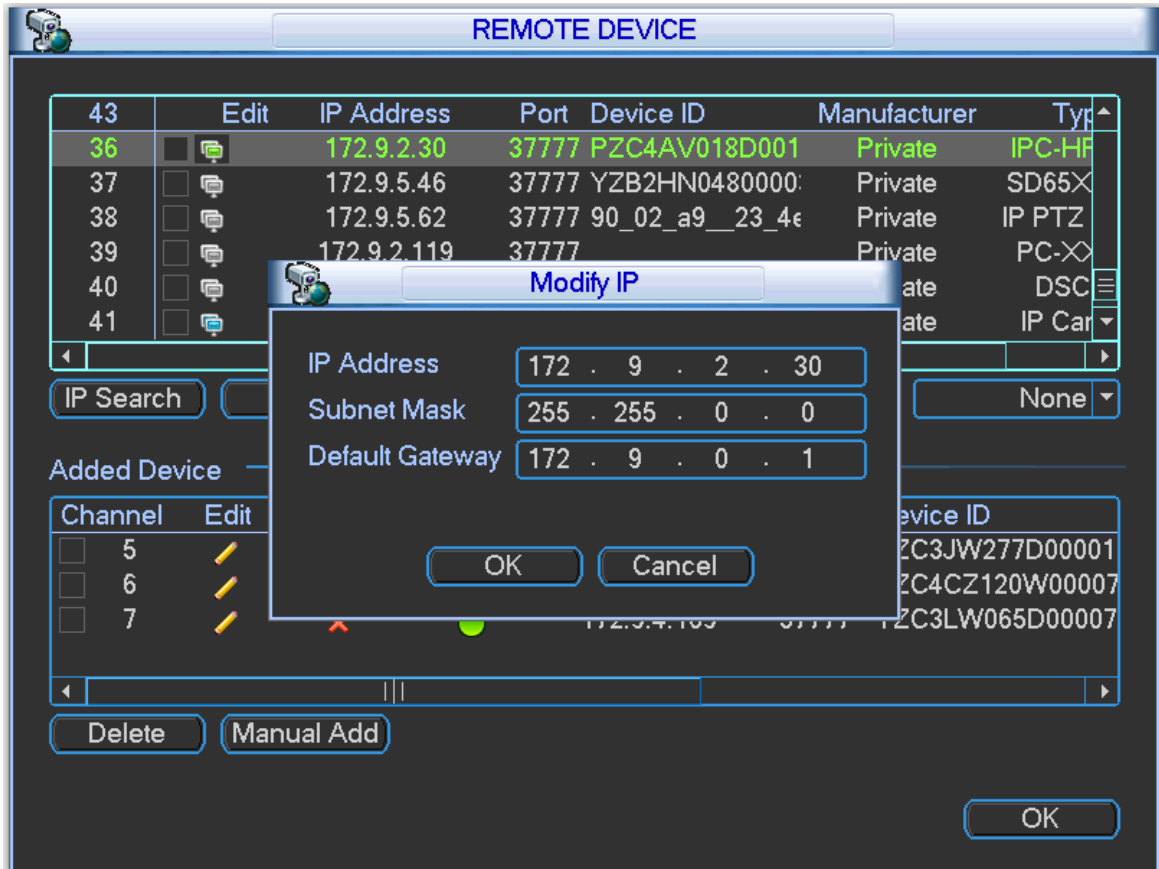


Figure 2-3

**Step 4**

Click "Confirm" after configuring corresponding IP address, the IP address of IPC is successfully saved. Attention: NVR products from some manufacturers may not support modifying device IP online if the in front of "Onvif" displays gray. It needs to login the WEB interface of IPC to modify IP address via PC under this circumstance, refer to IPC operation manual for more details.

**Step 5**

Click "Add" to add corresponding IPC into the NVR device channel, check if it is well connected via the icon color of "Connection Status". It means successful connection for the system when the color of the circle turns from red to green.

**Note:**

Differences may exist to the configuration interface for different NVR devices.

It will fail to search corresponding IPC if the IP address of IPC and the IP address of NVR are not in the same network segment.

## **2.2 WEB Setting**

Users can configure the IP address of IPC and the IP address of NVR via WEB.

### **2.2.1 Network Setting**

Select "System Setting > Network Setting", the system enter "Network Setting" interface, and users can set IP address of NVR on this interface.

### **2.2.2 IPC Configuration**

Select "System Setting > Advanced Options > Remote Device", system enter "Remote Device Setting" interface, and users can set IP address of IPC.

### **Auto Registration**

Select "Extended Configuration > Auto Registration", the system enters "Auto Registration" interface. Then it can configure "Server IP", "Port Number" and other parameters, after the device is registered to the server, it can visit the device after the successful connection between client and server.